

1-800-755-3867  
(DUMP)

# TRUCKCRAFT

TM

## TC-500 HEAVY DUTY TRUCK FLATS

### 100% Tempered Aluminum Alloy



Model 94x9 with optional Cab Guard & Tailboard



**FLOOR CONSTRUCTION**  
Plank extrusions provide rigid reinforcement every 5".



**RUB RAIL**  
5 1/2" custom shaped rub rail with mitered corners & stake pockets cut into the top.



**CAB GUARD**  
Profile shape with protected window area. 5 1/2" frame matches rub rail appearance. Bulkhead of 1/8" bright diamond plate.



**TAILBOARD**  
10" high, bright diamond plate with wrap around corners. Includes license plate light, 4 1/2" stop, tail, turn and backup lights.

100% heat treated aluminum alloy construction for maximum strength, lowest possible weight and great lifelong appearance. All materials are 6061-T6 extrusions with 37,000 PSI minimum tensile strength. The floor is constructed of aluminum alloy plank extrusions that provide rigid reinforcement every 5", and have a tongue-in-groove joint on top to take heavy punishment in stride. The standard longsills are 4" high x 2 1/4" wide structural aluminum channel, with optional 6" or 8" heights available for hoist, or extra heavy duty applications. Rub rails are a custom shape providing 5 1/2" side height with extruded ribs for added strength and improved appearance. The rub rails, as well as the front and back rails, have stake pockets cut into the top. Bed corners are mitered for safety and improved appearance. Body comes complete with flush mounting 2 1/2" grommet style clearance, marker, and I.D. FMVSS lights with wiring harness.

**Body Capacity Rating:** TC-500s have a load rating of 200 lb/SF evenly distributed load.

**\*NOTE:** Your truck, dumper & payload should not exceed the G.V.W. rating or axle rating usually found on the inside of the doorframe on the driver's side.





features that let your truck work harder

### Flats

Model #	Truck C.A.	Body Width	Body Length	Body Weight
81x95	56-60"	81"	7'11"	306#
81x100	56-60"	81"	8'4"	320#
81x110	56-60"	81"	9'2"	348#
94x95	56-60"	94"	7'11"	340#
94x100	56-60"	94"	8'4"	355#
94x110	56-60"	94"	9'2"	386#
94x120	84"	94"	10'0"	417#
94x130	84"	94"	10'10"	464#
94x145	84"	94"	12'1"	495#
96x110	60"	96"	9'2"	392#
96x120	84"	96"	10'0"	424#
96x130	84"	96"	10'10"	456#
96x145	84"	96"	12'1"	503#
96x170	120"	96"	14'2"	582#

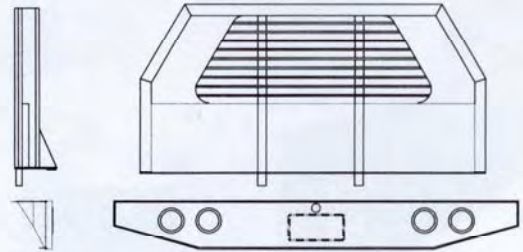
Bodies for Sprinter available

More sizes Available

### Cab Guards

Profile Shape **with protected window area**. Frame is made of 5 1/2" wide extrusion which matches appearance of rub rail. Window opening is profiled to truck window. Bulkhead below window is made of 1/8" bright diamond plate. Cab guard fits into front stake pockets and bolts to bed.

Body Width	Cab Guard Height
81"	40" STD.
94"	40" STD. 48" & 54" available
96"	40" STD. 48" & 54" available



### Tail Boards

Bright diamond plate aluminum with 4 1/2" stop, tail, turn lights, backup lights, license plate light and wiring harness. 10" high with wrap around corners.

### Hinged Gooseneck Trap Door

15" x 15" Trap Door with hinge lays flat when open.

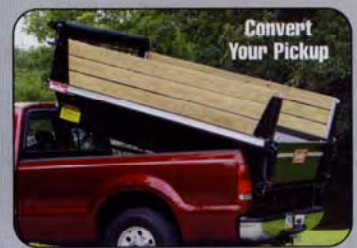
See price sheet for additional options.



5751 Molly Pitcher Hwy S.  
Chambersburg, PA 17202

FAX 717-375-2975 • 717-375-2900

## Tools for the Professional



1-800-755-3867

TruckCraft reserves the right to make product modifications without prior notice.

www.truckcraft.com